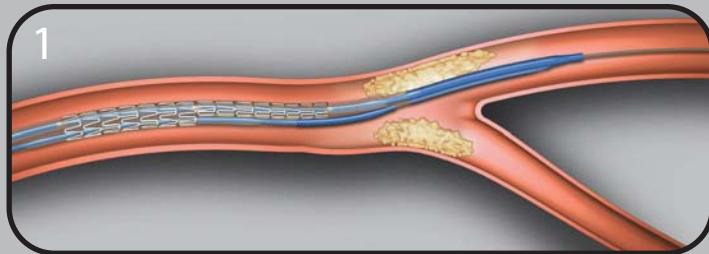
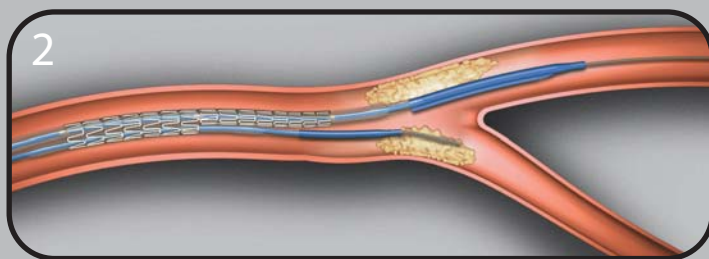


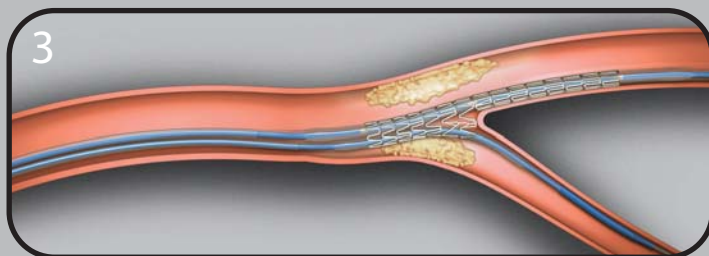
MULTI-LINK FRONTIER™ Coronary Bifurcation Stent System



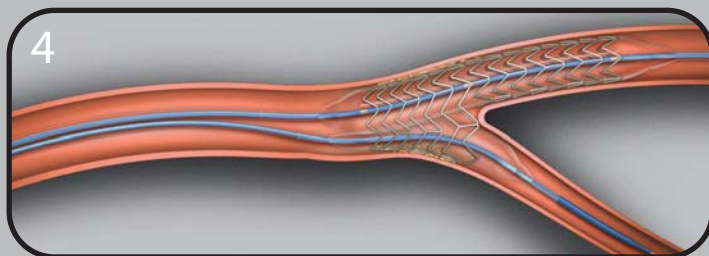
- ▶ ML FRONTIER™ System is advanced into main branch, over conventional RX wire.



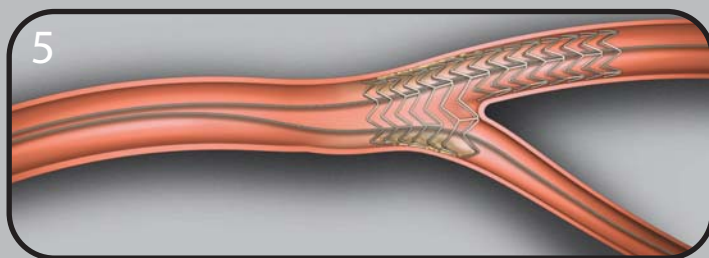
- ▶ Proprietary joining mandrel is retracted, releasing the OTW side branch tip. Exchange length guide wire is inserted.



- ▶ The second wire is positioned into the side branch and the system is advanced to the carina.



- ▶ Simultaneous inflation of dual balloons, using single inflator, expands stent into main and side branch.



- ▶ System is retracted, preserving access to both branches.